

# Christmas Sing-Along

arranged by  
**Paul Jennings**

## **An Important Notice About Your Rights To Duplicate**

With the purchase of this product, you (one teacher) may legally duplicate the reproducible student pages for use with your students, no matter how many students you have, even if you teach in more than one school. Permission to duplicate and/or share this book or recording with anyone else is **not** granted and is considered a copyright infringement. Permission is granted to duplicate the accompanying recording for back-up purposes only.

**Please don't teach your students to steal.**

The people who write and publish this music depend on its sales for their livelihood. Not only is it illegal for you to freely duplicate their work without their permission, it is also unfair and it sets a bad example for your students. We will always fight for your rights to better pay and working conditions, and as one of the few active elementary music publishers, we invest most of our profits in new music and resources for you. We also take care to provide real value in our products. In return, we ask for your support of our rights. **Thank you.**



P. O. Box 26627  
Wauwatosa, WI 53226

# Christmas Sing-Along

SOFTLY (BUT NOT TOO FAST) (♩ = 84-88)

arr. Paul Jennings

*n.c.* *tu*

The piano introduction consists of two staves. The right hand starts with a treble clef, a key signature of two flats (B-flat and E-flat), and a 4/4 time signature. It features a series of chords and melodic lines, including a wavy line at the top. The left hand starts with a bass clef and provides a simple harmonic accompaniment. Dynamics include *f* and *fp*.

This system shows the piano accompaniment for the first system. The right hand has a treble clef and the left hand has a bass clef. Chords are indicated above the right hand: Ab, Fmi7, Eb/G, Ab, Eb/Bb, Bb7, Eb, and CHIMES. The music is in 4/4 time and features a simple harmonic accompaniment.

9 3 TIMES "Deck The Halls"

The first system of the song features a vocal line and piano accompaniment. The vocal line is in a treble clef with a key signature of two flats and a 4/4 time signature. The lyrics are: "Deck the halls with boughs of hol - ly. See the blaz - ing yule be - fore us. Fast a - way the old year pass - es." The piano accompaniment is in a bass clef. The lyrics are followed by a bracketed section: "Fa la la la la la la la la." The piano accompaniment includes a "CHIMES" section.

The second system of the song features a vocal line and piano accompaniment. The vocal line is in a treble clef with a key signature of two flats and a 4/4 time signature. The lyrics are: "'Tis the sea - son to be jol - ly. Strike the harp and join the cho - rus. Hail the new, ye lads and lass - es." The piano accompaniment is in a bass clef. The lyrics are followed by a bracketed section: "Fa la la la la la la la la." The piano accompaniment includes a "CHIMES" section.

# Christmas Sing-Along

17 *mf* *CAES.*

Don we now our gay ap-par-el.  
 Fol-low me in mer-ry mea-sure. } Fa la la la la la la la.  
 Sing we joy-ous, all to-geth-er.

*Fm1/Bb Eb1/Bb Eb Cm1 Ab/F F7 Eb(?)*

*mf CAES.*

*f*

Troll the an-cient Yule-tide car-ol.  
 While I tell of Yule-tide trea-sure. } Fa la la la la la la la.  
 Heed-less of the wind and weath-er.

*N.C. Ab Eb1/Bb (Ab) Eb1/Bb Ab7 Eb*

*f*

25

*(Eb) Ab Eb/G A° Eb1/Bb Fm1? Ab7 Eb*

29 "Up On The Housetop"

Up on the house-top, rein-deer pause. Out jumps good old San-ta Claus.

*Eb Ab Eb/G Fm1? (Ab7)*

*(BREAK TIME)*

# Christmas Sing-Along

Down through the chim-ney with lots of toys. All for the lit-tle ones, Christ-mas joys.

Chords: Eb, Ab, Eb/G, Fmi<sup>7</sup>, Bb<sup>7</sup>, Eb

Ho, ho, ho! Who would-n't go! Ho, ho, ho! Who would-n't go!\_

Chords: Ab, Eb

Up on the house-top, click, click, click. Down through the chim-ney with good Saint Nick.

Chords: Eb, Ab/G, Eb/Bb, A<sup>0</sup>, Eb/Bb, Fmi<sup>7</sup>, Bb<sup>7</sup>, Eb

45 "Jingle Bells"

+ RATCHET  
+ KAZOOS, OPT.

Chords: Eb, (+CONTINUE), SIM.

+ UPPER BRASS (MUTED)

# Christmas Sing-Along

Musical notation for the first system, including vocal line and piano accompaniment. The piano part features chords labeled  $A^b/E^b$ ,  $E^b$ ,  $B^b$  sus, and  $B^b$ .

55

Dash-ing through the snow, in a one horse o - pen sleigh.

$E^b$  (CONT. SIM.)  $A^b$

Musical notation for the second system, including vocal line and piano accompaniment. The piano part features chords labeled  $E^b$  and  $A^b$ .

O'er the fields we go laugh-ing all the way.

$B^b$  N.C. (STOP TIME)

Musical notation for the third system, including vocal line and piano accompaniment. The piano part features chords labeled  $B^b$  and N.C. (No Chords).

63

Bells on bob-tail ring. Mak-ing spir-its bright. What

$E^b$  (CONT. SIM.)

Musical notation for the fourth system, including vocal line and piano accompaniment. The piano part features chords labeled  $E^b$ .

# Christmas Sing-Along

fun it is to ride and sing a sleigh-ing song to - night! Oh!

Chords:  $Bb^7$ ,  $Ab$ ,  $Bb^7$ ,  $Obsus$ ,  $Bb^7$ ,  $Eb$ ,  $Bb^7$

Jin - gle bells! Jin - gle bells! Jin - gle all the way!

Chord:  $Eb$

Oh, what fun it is to ride in a one horse o - pen sleigh!\_\_\_\_\_

Chords:  $Ab$ ,  $Eb$ ,  $F^7$ ,  $Obsus$ ,  $Bb^7$

Jin - gle bells! Jin - gle bells! Jin - gle all the way!

Chord:  $Eb$

# Christmas Sing-Along

Oh, what fun it is to ride in a one horse o - pen sleigh!

Handwritten annotations:  $A^b$ ,  $E^b$ ,  $E^b$ ,  $E^b$ ,  $\wedge$

87) ACCEL.

N.C. (+ STRING TREM.)

> + TIMPANI + SUS. CYM.

$fz$

$fz$  Ped.

(♩ = ♩)

Handwritten annotations:  $fz$ ,  $fz$ , Ped., (♩ = ♩)

95)  $fz$  Ped.

$C^7(13)$

Handwritten annotations:  $fz$ ,  $C^7(13)$

MEASURELY (♩ = 120) "We Wish You A Merry Christmas"

We

$f$

F  $A^2$   $Dm$   $F/A$   $E^b$   $Gm$   $C^7$   $F$

Handwritten annotations: F,  $A^2$ ,  $Dm$ ,  $F/A$ ,  $E^b$ ,  $Gm$ ,  $C^7$ , F,  $f$

# Christmas Sing-Along

99

wish you a mer-ry Christ-mas. We wish you a mer-ry Christ-mas. We

(F) F/A B $\flat$  D $^7$ /A G G/B C C $^7$ /B $\flat$

wish you a mer-ry Christ-mas, and a hap - py New Year! Good

A A/C# Dmi F/A B $\flat$  Gmi C $^7$  F

*mf*

107

tid - ings to you wher - ev - er you are. Good

*f* (STRINGS, WOODWINDS) C Dmi C/G G C C/E

tid - ings for Christ-mas, and a hap - py New Year! We

*f* F C/G F/A B $\flat$  F/A B $\flat$  Gmi C $^7$  F



# Christmas Sing-Along

115

wish you a mer-ry Christ-mas. We wish you a mer-ry Christ-mas. We

Chords: F, F/A, Bb, D7/A, G, G/B, C, C7/Bb

wish you a mer-ry Christ-mas, and a hap-py New Year! And a

Chords: A, A/C#, Dmi, F/A, Bb, Gmi, C7, F

123

hap-py New Year!

Chords: Bb, Gmi, C7

Annotations: *OPT. DIV.*, *Sim.*

Mer-ry Christ-mas!

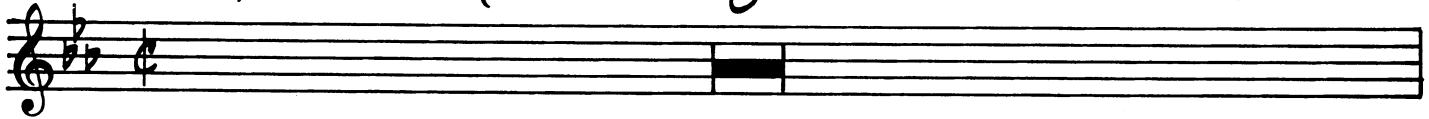
Annotations: *SHOUT:*, *SINGLE BELLS*, *+IMP.*

# Christmas Sing-Along

SOLOUSLY, BUT NOT TOO FAST (♩ = 84-88)

8

arr. Paul Jennings



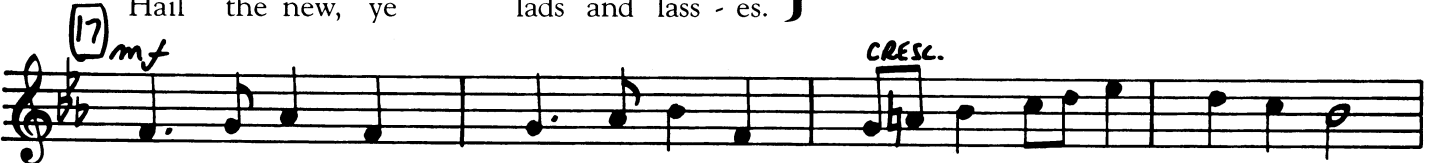
**9** 3 TIMES "Deck The Halls"



Deck the halls with boughs of hol - ly.  
 See the blaz - ing yule be - fore us. } Fa la la la la la la la.  
 Fast a - way the old year pass - es.



'Tis the sea - son to be jol - ly.  
 Strike the harp and join the cho - rus. } Fa la la la la la la la.  
 Hail the new, ye lads and lass - es.



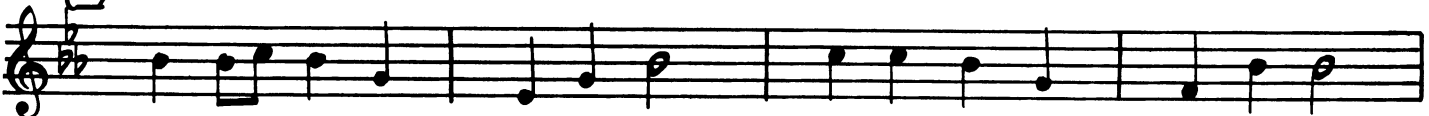
Don't we now our gay ap - par - el.  
 Fol - low me in mer - ry mea - sure. } Fa la la la la la la la.  
 Sing we joy - ous, all to - geth - er.



Troll the an - cient Yule - tide car - ol.  
 While I tell of Yule - tide trea - sure. } Fa la la la la la la la.  
 Heed - less of the wind and weath - er.



**29** "Up On The Housetop"



Up on the house-top, rein-deer pause. Out jumps good old San - ta Claus.

# Christmas Sing-Along



Down through the chim-ney with lots of toys. All for the lit-tle ones, Christ-mas joys.



Ho, ho, ho! Who would-n't go! Ho, ho, ho! Who would-n't go!\_\_

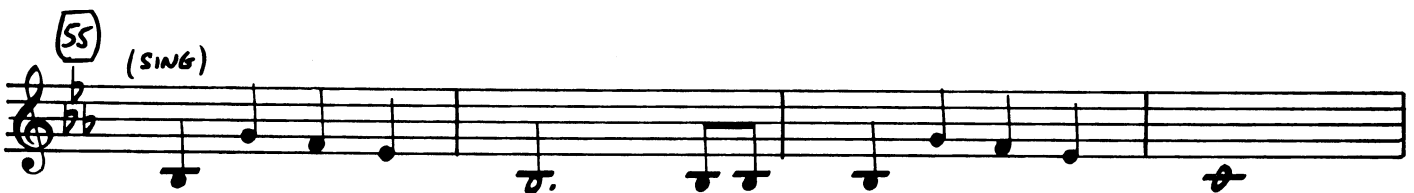


Up on the house-top, click, click, click. Down through the chim-ney with good Saint Nick.



"Jingle Bells" 2

(+ KAZOOS, OPT.)



(SING)

Dash-ing through the snow, in a one horse o - pen sleigh.

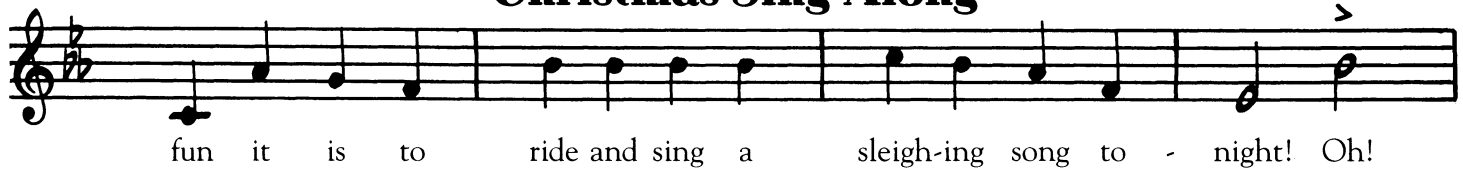


O'er the fields we go laugh-ing all the way.



Bells on bob - tail ring. Mak-ing spir - its bright. What

# Christmas Sing-Along



fun it is to ride and sing a sleigh-ing song to - night! Oh!

71



Jin - gle bells! Jin - gle bells! Jin - gle all the way!

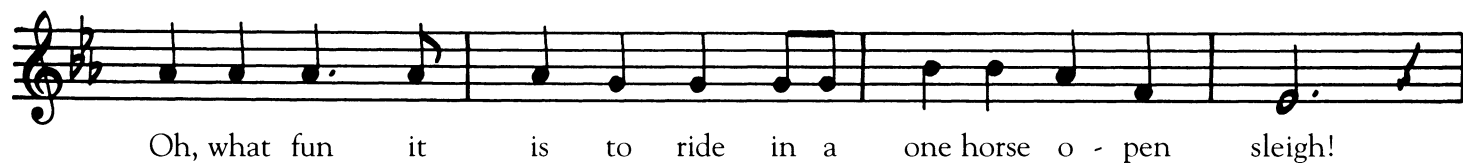


Oh, what fun it is to ride in a one horse o - pen sleigh!\_

79

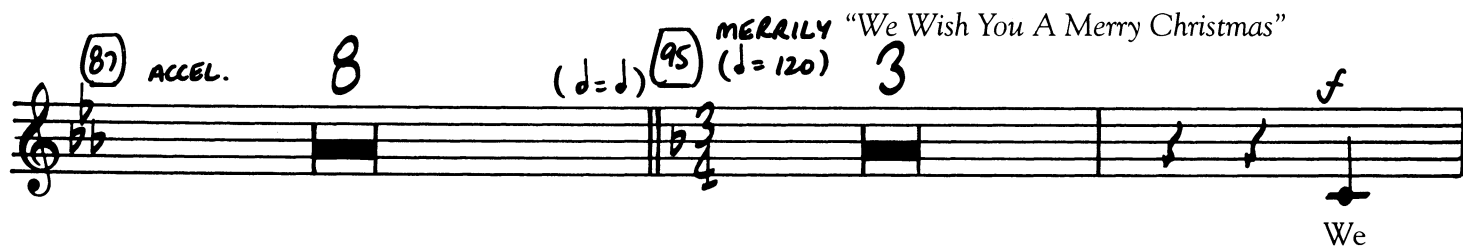


Jin - gle bells! Jin - gle bells! Jin - gle all the way!



Oh, what fun it is to ride in a one horse o - pen sleigh!

87 ACCEL. 8 (♩ = ♩) 95 MERRILY (♩ = 120) 3 f

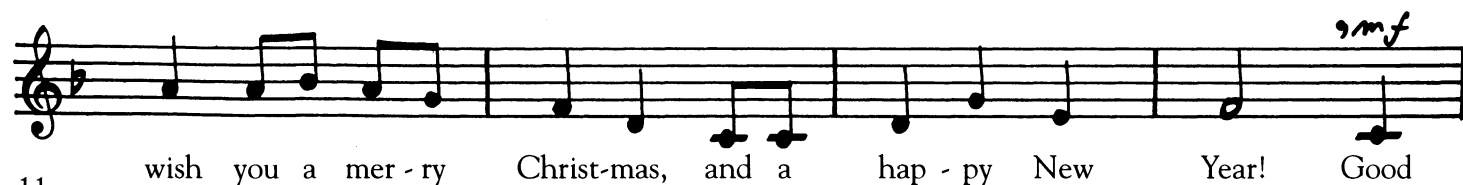


We

99



wish you a mer - ry Christ - mas. We wish you a mer - ry Christ - mas. We



wish you a mer - ry Christ - mas, and a hap - py New Year! Good

# Christmas Sing-Along

(107)

tid - ings to you wher - ev - er you are. Good

tid - ings for Christ-mas, and a hap - py New Year! We

(115)

wish you a mer-ry Christ - mas. We wish you a mer-ry Christ-mas. We

wish you a mer-ry Christ-mas, and a hap - py New Year! And a

(123)

hap - py New

(OPT. DIV.)

Year!

2

Mer - ry Christ-mas!

SHOUT: > > > >

# Christmas Sing-Along

## *“Deck The Halls”*

Deck the halls with boughs of holly. Fa la la la la la la la.  
'Tis the season to be jolly. Fa la la la la la la la.  
Don we now our gay apparel. Fa la la la la la la la.  
Troll the ancient Yuletide carol. Fa la la la la la la la.

See the blazing yule before us. Fa la la la la la la la.  
Strike the harp and join the chorus. Fa la la la la la la la.  
Follow me in merry measure. Fa la la la la la la la.  
While I tell of Yuletide treasure. Fa la la la la la la la.

Fast away the old year passes. Fa la la la la la la la.  
Hail the new, ye lads and lasses. Fa la la la la la la la.  
Sing we joyous, all together. Fa la la la la la la la.  
Heedless of the wind and weather. Fa la la la la la la la.

## *“Up On The Housetop”*

Up on the housetop, reindeer pause. Out jumps good old Santa Claus.  
Down through the chimney with lots of toys. All for the little ones, Christmas joys.

Ho, ho, ho! Who wouldn't go! Ho, ho, ho! Who wouldn't go!  
Up on the housetop, click, click, click. Down through the chimney with good Saint Nick.

## *“Jingle Bells”*

Dashing through the snow, in a one horse open sleigh.  
O'er the fields we go laughing all the way.  
Bells on bobtail ring. Making spirits bright.  
What fun it is to ride and sing a sleighing song tonight!

Oh! Jingle bells! Jingle bells! Jingle all the way!  
Oh, what fun it is to ride in a one horse open sleigh!  
Jingle bells! Jingle bells! Jingle all the way!  
Oh, what fun it is to ride in a one horse open sleigh!

## *“We Wish You A Merry Christmas”*

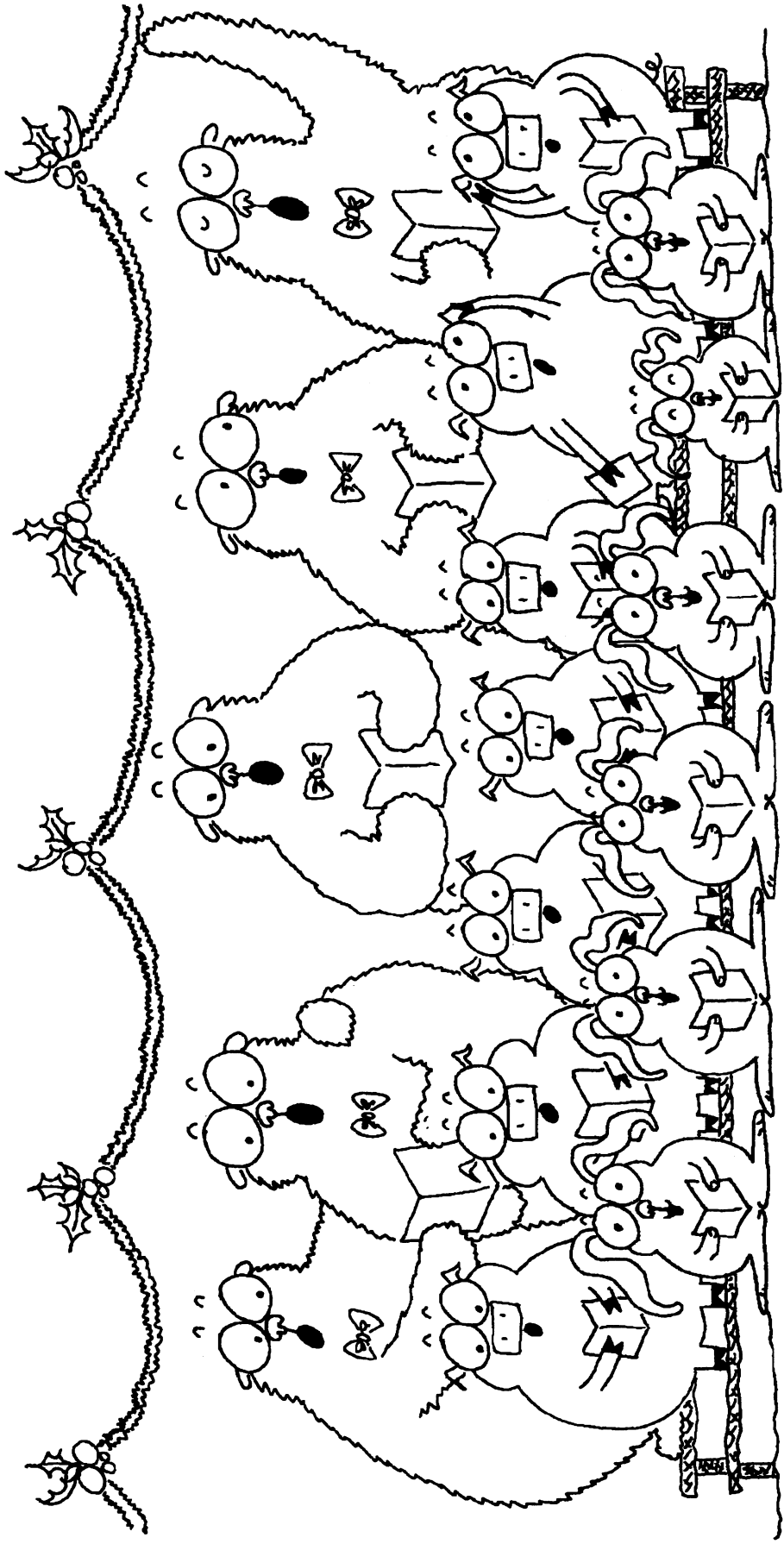
We wish you a merry Christmas. We wish you a merry Christmas.  
We wish you a merry Christmas, and a happy New Year!

Good tidings to you wherever you are.  
Good tidings for Christmas, and a happy New Year!

We wish you a merry Christmas. We wish you a merry Christmas.  
We wish you a merry Christmas, and a happy New Year!  
And a happy New Year!

*shout:*  
Merry Christmas!

# Join us for a Christmas Sing-Along!



**Date:** \_\_\_\_\_ **Time:** \_\_\_\_\_ **Place:** \_\_\_\_\_

---

# Teaching Notes for Christmas Sing-Along

Having produced and performed numerous Christmas programs over the years, the one thing we know for sure is that audiences love to participate in sing-alongs! This arrangement is written so that singers of any age can join in the fun. If you are using the Performance/Accompaniment compact disc or cassette, you will be treated to a traditional orchestration which features woodwinds, brass, strings, and percussion for just the right seasonal flavor. The four songs included in the medley are, "Deck The Halls," "Up On The Housetop," "Jingle Bells," and a rousing finale of "We Wish You A Merry Christmas." Since these songs are so familiar, we feel certain your audience and student performers will have no difficulty following along. We have included a reproducible lyric sheet in this booklet, which you may reproduce as much as you wish for your rehearsals and performances.

The song, "Deck The Halls," is the first one, beginning at measure 9 with a dynamic of *forte*, and repeating for three full verses. As you might expect, the dynamic level at measure 17 drops to a *mezzo forte* for four measures, with a *crescendo* into the last four bars of each verse. If you can tell your audience to watch for this before you have them sing, they might feel more like they are part of the performing ensemble. In fact, you could even "practice" with them briefly, having them sing a little before the complete performance. This would also familiarize them with your conducting technique so they can follow you more comfortably. You could do this for several spots throughout the entire work so that they truly have a sense of rehearsing and participating!

The second tune is "Up On The Housetop!" which every veteran of the season should know. There is a four measure introduction which establishes style and pitch. The tempo is the same as the first tune.

At measure 45, there is a two measure introduction to the next song, "Jingle Bells." If you wish to use kazoos, they are cued in the vocal part. If not, the melody is covered in the orchestration by muted brass. This section is actually more of the introduction to the tune. Listen to the recording to

hear how it goes. The verse begins at 55 with the well-known lyrics, "Dashing through the snow..." It has been our experience that there are a number of variations on the lyrics and ways to sing this old ditty, so the use of the lyric sheet may help here. Or, if you decide to do the pre-performance rehearsal of each tune as suggested previously, you could go over the particulars at that time. For example, you may hear a few folks sing "laughing all the way, hey, hey, hey." If that's okay with you, you may even wish to incorporate it into the performance. You could also let a group of your kazoo performers just keep playing the kazoos throughout the song while the rest of the singers and audience perform the lyrics. Whatever makes it fun!

At measure 87, there is an *accelerando* which takes the bouncy two beat smoothly into a 3/4 at measure 95. The melody is briefly stated as an introduction in the orchestration so that your audience and performers will know what the new tempo, style and key are. Four measures later, they'll all be singing, "We Wish You A Merry Christmas!" Again, the lyrics may be different than some are familiar with, so going over them might be helpful. At the end of the piece, the song breaks into an optional divisi. Your audience could continue to sing the melody notes, join in the harmony (if you let them rehearse, this will be neat!), or just listen to the choir finish the performance. If you do rehearse, be sure to work on the "Merry Christmas!" at the very end as well.

If you are in a situation where you would prefer to perform this piece entirely in a live setting, there is also an optional Grade II 1/2 Concert Band arrangement available (SP-118). It is the same length, etc., as the recording, but is written specifically for young instrumentalists. Contact Plank Road Publishing, Inc., for more details.

Included on page 14 of this booklet, you will find a reproducible poster. Photocopy it as much as you need on colored paper for the season, or white paper, which can then be colored by your budding young art students! Post them at school and in the community to get the word out!